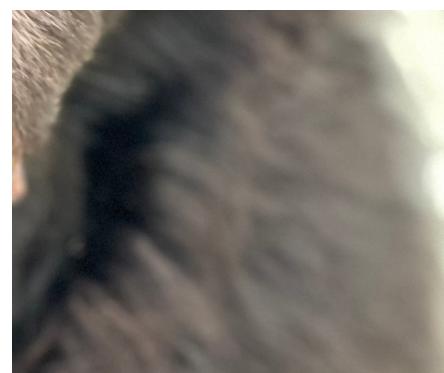
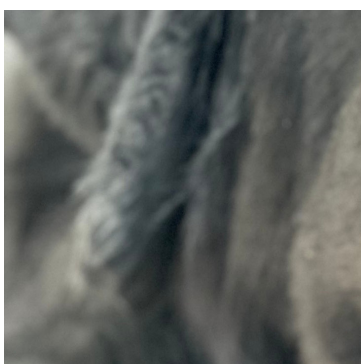


2025

Impact Report

Creating a safe
and healthy
future for every
Newfoundland.

YOUR GIFT
THEIR FUTURE

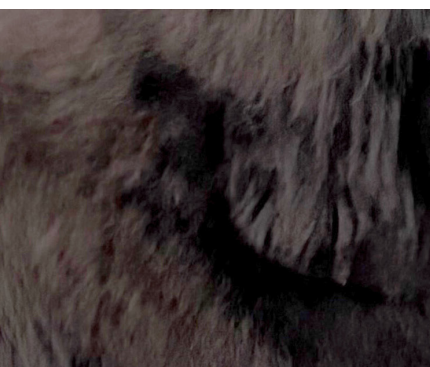
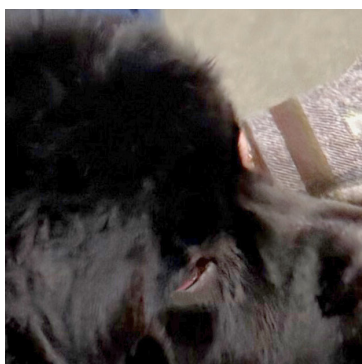


Our Mission

The mission of the Newfoundland Club of America Charitable Trust is to secure donations, to manage and distribute research grants to study health issues affecting Newfoundlands, to provide necessary monetary aid for Newfoundland rescue assistance, to award educational scholarships to junior Newfoundland fanciers, and to provide general education involving the care, raising, health, nutrition, training, disease, research, breeding, judging and exhibiting the Newfoundland breed.



National Rescue Network



Education &
Junior
Scholarship



Newfoundland
Health
Challenge &
Research

Chairman's Report

Thirty-seven Newfoundland Dogs confiscated in Montana, Hemangiosarcoma research, Junior Scholarships and Health Education Seminars; What do these all have in common?

The Newfoundland Club of America Charitable Trust (NCACT) financially supports all these activities.

NCA National Rescue recently assisted with the rescue and placement of 37 rescued Newfoundland Dogs in Montana. The NCACT Research Advisory Committee reviews research grants from the Morris Animal Foundation (MAF) and the AKC Canine Health Foundation and recommended funding research grants at MAF for Hemangiosarcoma in dogs. The activities of the Trust also includes funding Newfoundland Junior Scholarships and Educational Seminars at the National Specialty.

As the Trust enters our 29th year as a 501c3 Charitable entity, I am reminded of our humble beginnings to invest in the future health of Newfoundland dogs thru supporting research and to assist Newfoundland dogs in need and assist in placing them in their forever homes. Over the years the Trust has grown to include scholarship and educational activities to benefit the future of Newfoundland dogs and their companions (owners).

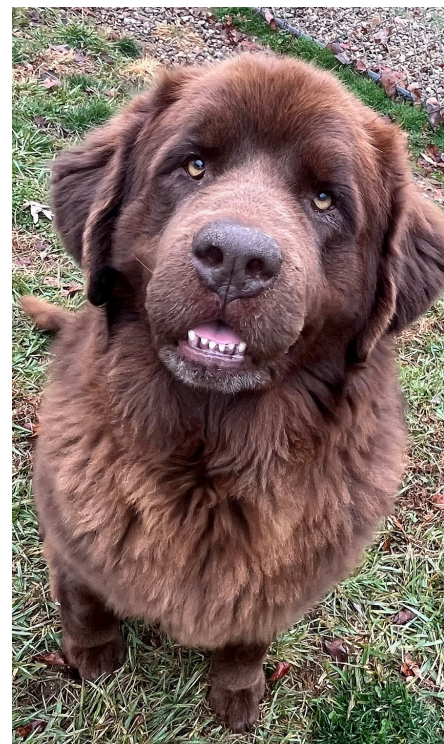
The NCA Charitable Trust is not simply a charitable entity, it is You, our donors. For without you none of our work would be possible. Some of our donors exhibit Newfoundland Dogs in a wide array of activities including conformation shows, obedience, working activities, therapy work and even as lifeguards. Many of our donors are simply Newfoundland dog owners who love and enjoy their Newfoundland as a pet, companion, and family member. The NCA Charitable Trust thrives and accomplishes our mission with YOU, our donors.

Each year as I review the Trust activities and prepare to write this annual report, I am always grateful and thankful to our generous donors who support our mission. Please take a few minutes to read the committee updates in this report.

Thank You for your generous donations and support.

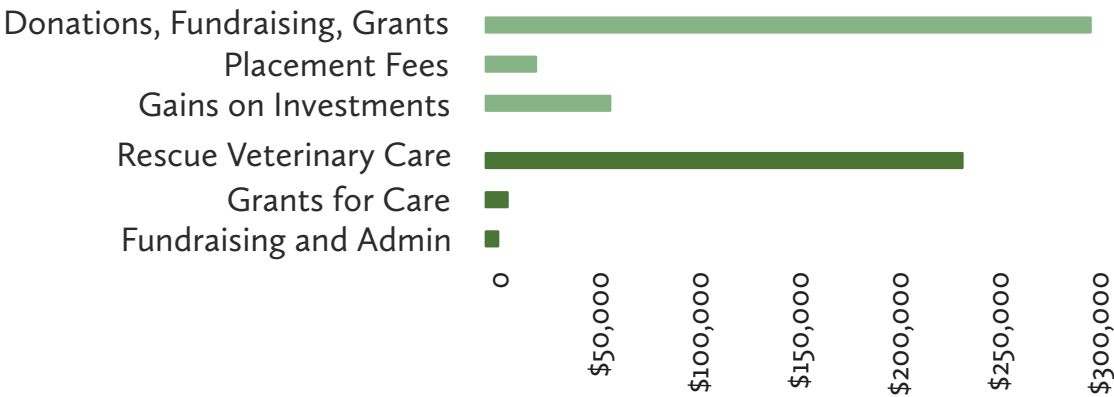
Clyde E. Dunphy, DVM

NCA Charitable Trust Chairman



National Rescue Network

The NCA National Newfoundland Rescue Network is the coordinated rescue arm of the Newfoundland Club of America Charitable Trust, dedicated to providing a compassionate safety net for Newfoundland dogs in need across the United States. Through a nationwide network of regional clubs and committed volunteers, the program works to place displaced Newfoundlands into loving, pre-screened homes while offering resources, support, and education to both current and prospective owners. Supported by generous donations and sustained volunteer efforts, the Rescue Network reflects the Club's longstanding mission to protect and advance the interests of the breed, ensuring that every Newfoundland in need receives thoughtful care, advocacy, and a second chance at a forever family.



Total Vet Care

\$210,527



Newfs
Assisted

196



Rescue Network

Working collaboratively, the NCA National Rescue Network provides comprehensive volunteer rescue services throughout the United States.



7

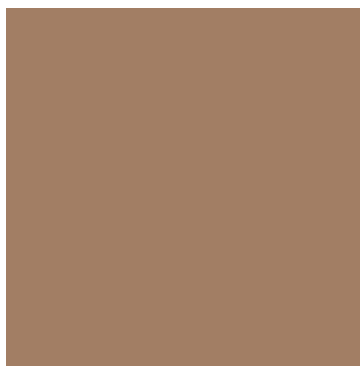
NCA Volunteer
Rescue Teams

16

NCA Regional
Club Rescues



Pepper



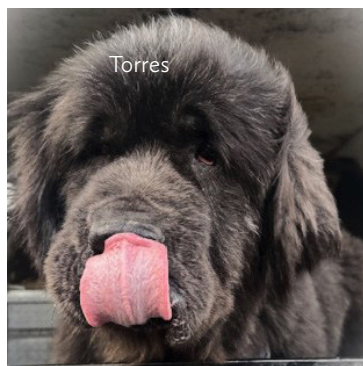
Zeus



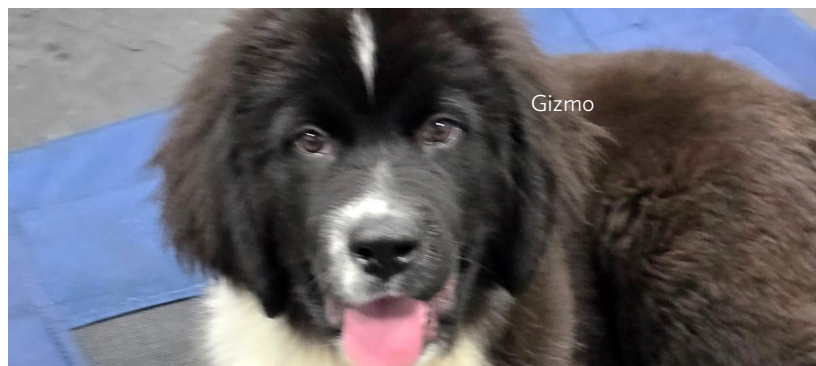
Squishy



Dezzie



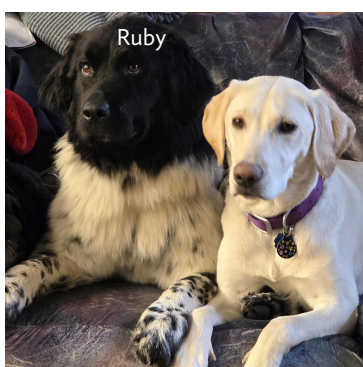
Torres



Gizmo



Hazel



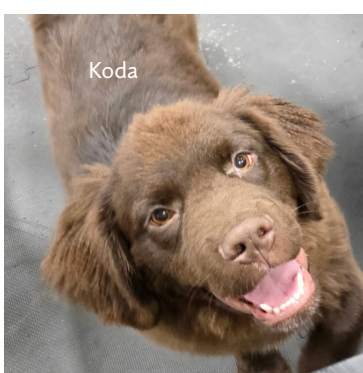
Ruby



Nala



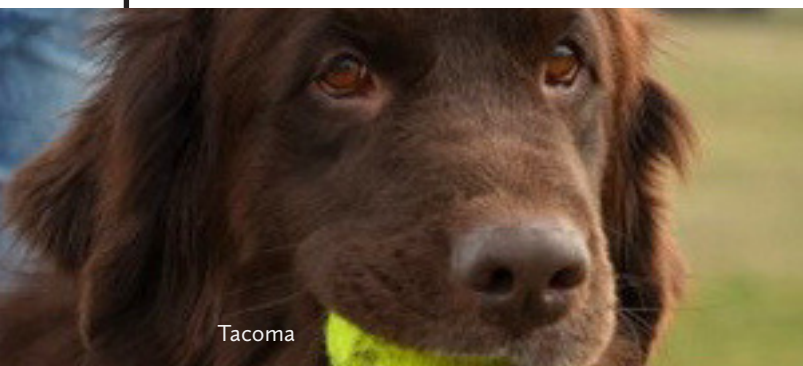
Aliza



Koda



Montana
Rescue



Tacoma

Rescue Report

NCA Rescue exists to help Newfoundlands and to provide resources for volunteers, adopters, professional services, and others who are dedicated to Rescue work. This help takes many forms and is supported with extraordinarily generous donations.

Early in September, 2025 “Esme” was purchased from a Montana producer. When “Esme” was examined by the buyer’s veterinarian this 8 year old weighed 53 lbs. Records showed a loss of 62 lbs. in less than a year when the breeder sold her to the producer. The veterinarian filed a complaint with the Yellowstone County Sheriff’s Office.

Yellowstone County Sheriff’s Department Captain Kent O’Donnell and the Animal Control Officer seized 42 dogs – 37 Newfoundlands and five Australian Shepherds by a Yellowstone County District Court warrant. Four horses were confiscated in Octoctober based on another warrant.

Deputy Yellowstone County Attorney Ingrid Rosenquist, a dog owner and breed enthusiast with connections to those who show Newfoundland dogs, charged the two producers with felonies based in-part on evidence showing a total weight gain of 239.4 pounds—an average of 10.4 pounds per dog by October 25, 2026—and about 300 pounds collectively by November 17, 2025.

Captain O’Donnell, a current and past Newfoundland owner, developed steps to provide the care required for successful outcomes. The five Australian Shepherds were moved to foster care for placement.

Seven Newfoundlands were returned to their co-owners and original out-of-state breeders following interviews. Thirteen puppies - 6 12-week-old and 7 9-week-old puppies - entered the Montana Women’s Prison Prison Paws program and remained in the program for three months.

Seventeen Newfoundlands – young adults, seniors, males and females – began their journeys. NCA Rescue was contacted to develop a plan to support these Newfs.

37

Newfoundlands
Seized

3

Months of care, treatment and
placement

Veterinary care was provided by Clarity Animal Hospital and included several rounds of parasite treatments, vaccinations, microchips, and medications with very generous discounts. First exams indicated some Newfs might require euthanasia due to their poor condition. Quarantine for kennel cough was required too.

An untreated torn cruciate and an old break in a hind leg were found on Torres, a tall 7-year-old stud dog, weighing 70 lbs. During the required amputation, fence wire wrapped around his leg and abdomen was removed from his matted coat.

Spay-Neuter clinics were held on Saturday and Sunday, December 20th and 21st for 12 adult Newfoundlands by Vet to Go, Inc. and included deep discounts for these vital services.

Groomingdale's Salon & Pawtique scheduled sessions after their usual business hours. Their professional groomers clipped nails, cleaned ears, bathed, brushed and trimmed the adult Newfs. They discounted their services to \$30.00 for each Newf.

TV interviews, local newspaper articles and social media announcements generated many adoption applications and extraordinary donations. Then the interview and screening process started to find the best adoptive families. Puppies were placed with spay/neuter rebate agreements including four puppies placed with Dog Tag Buddies, an organization that trains and places service dogs with veterans living with PTSD.

All Newfs were placed in Montana and most adopters have extensive experience with Newfs. All were placed with a return policy that ensures lifelong support. Some placement fees were waived based on the Newf's age or other considerations. Some were adopted by Deputies, retired Deputies, Animal Control Officers, Firefighters, etc. and others were adopted through NCA Rescue's adoption process.

NCA members and other Newfoundland fanciers referred potential adopters. NCA Newf Ambassador Elizabeth Heath met with the County, took photos, recruited adopters and foster care providers via her "Newfoundlands of Montana" group of over 550 members and is providing ongoing assistance the new owners.

Donations received from local vendors, including over 6,000 lbs. of dog food and other supplies, and from Montana citizens, NCA members and Newfoundland fanciers subsidized all these costs including fence panels in the tent, enhanced boarding facilities due to severe weather conditions, etc.

Now the success stories are arriving. "Vivi went to the perfect home Thursday. She gained 39 lbs. since her arrival", reported Capt. O'Donnell. "Vivi", a senior, now enjoys the company of two Boxers and their daily walks together. She receives ongoing veterinary care for ear infections.

Captain O'Donnell and his wife Judy adopted "Torres", now "Tank", the three-legged Newf. They say, "He is amazingly fast when he wants to chase chickens. Discussions are underway!"

Every donation supports our mission – to protect, preserve and cherish Newfoundlands– and shares our commitment to provide permanent homes for Newfoundlands for the rest of their lives. Each donation multiplies the effect of your support, ideas and volunteer hours.

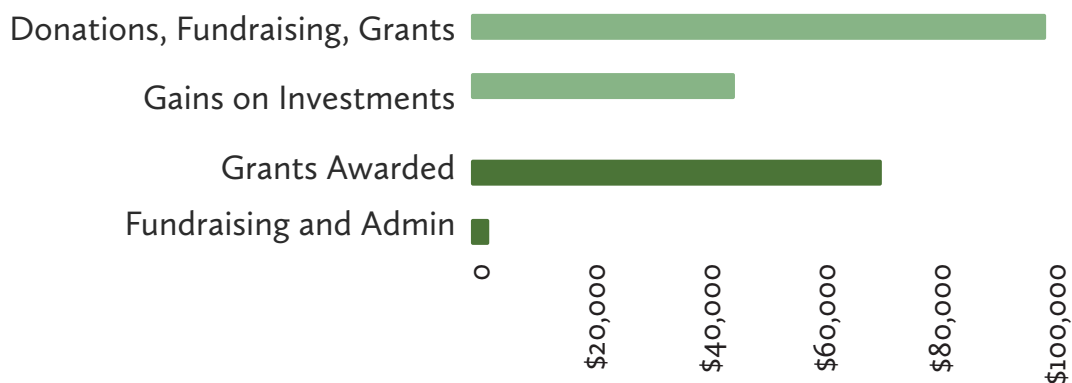


Capt. Kent O'Donnell

THANK YOU!

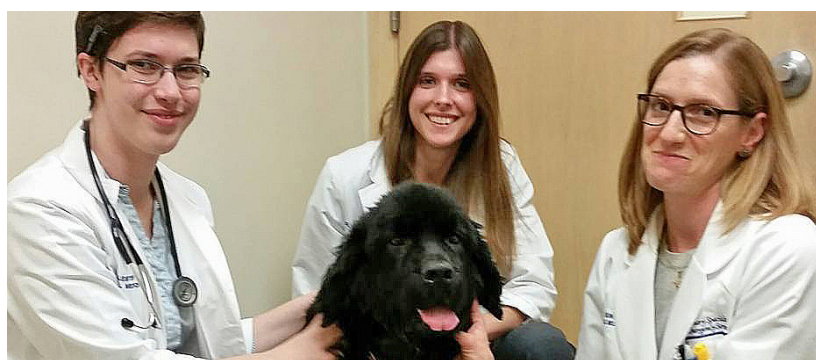
Newfoundland Health Challenge

The NCA Newfoundland Health Challenge is a long-term, mission-driven fundraising initiative of the Newfoundland Club of America Charitable Trust, dedicated to advancing vital health research that improves both the quality and longevity of Newfoundland dogs. Established to support peer-reviewed studies addressing serious breed-specific conditions, including bloat, lymphoma, cystinuria, joint disorders, and devastating cancers such as hemangiosarcoma, the Health Challenge funds decisive research in partnership with organizations like the AKC Canine Health Foundation and Morris Animal Foundation, while also providing practical resources such as testing rebates that have helped virtually eliminate certain inherited diseases. Hemangiosarcoma, a silent and aggressive cancer most common in large breeds, often strikes with little or no warning and carries a heartbreaking prognosis, reminding us that “though your time with us may be limited, your spirit will forever soar in our hearts.” Through donor support, the Health Challenge is actively working to find answers, recently funding four peer-reviewed studies at the Morris Animal Foundation to better understand and combat this disease. This is your money at work for the health of our breed because every contribution matters, regardless of size, and reflects our shared belief that the search for knowledge, as E. O. Wilson observed, is never quenched. To every donor, past and future: thank you for helping secure a healthier future for our beloved gentle giants.



Grants Awarded

\$60,070



Active
Studies

9



Research Advisory

The Research Advisory Committee (RAC): Bill Cuddy, Sharon Gwaltney-Brant, Lori Littleford, Sharon Oviatt, Roger Powell, and Tamzin Rosenwasser, reviewed five 2025 Innovation Grants and four 2026 Canine Grants available through the Morris Animal Foundation (MAF); however, no AKC Canine Health Foundation (AKC-CHF) studies were considered this year due to the Donor Advised Fund balance being below the funding minimum. In addition, RAC has responded to multiple inquiries about ongoing studies by contacting investigators directly to confirm enrollment status, gaining insight into current health challenges faced by Newfoundland owners and helping connect families with active researchers when possible. We encourage everyone to explore the Morris Animal Foundation and AKC Canine Health Foundation websites, which offer valuable educational resources to support informed, proactive care for Newfoundlands.

In 2024, we funded study D25CA-003 – A Novel, Multi-Faceted Gene Therapy Approach to Osteoarthritis (OA) in Dogs, Dr. Laurie Goodrich PhD, DVM Colorado State University. This study is ongoing and scheduled to complete in 2026. We also funded MAF pilot grant D25CA-807 RDW (Red Blood Cell Distribution Width), a potential prognostic biomarker in canine aging, Nicole C. Riddle, PhD, University of Alabama at Birmingham and are waiting on the final report. This year we lost a great friend and researcher Vilma Yuzbasiyan-Gurkan, PhD, Michigan State University. She was studying the genetic basis of subvalvular aortic stenosis (SAS) in Newfoundland dogs. This project is scheduled to complete 4/30/2026 but may be delayed due to her loss. We funded study D24CA-523 Working Toward an Early Diagnostic Test for Hemangiosarcoma, Andrea Pires dos Santos, DVM, MSc, PhD, Purdue University. Researchers are studying the feasibility of using microRNAs as an early detection and prognostic tools for hemangiosarcoma in dogs. This project is scheduled to complete 12/31/2025 and we look forward to a final report. Dr. Herbert's Cutting Balloon Angioplasty Study is now fully enrolled and he is hoping to present the data at the ACVIM conference in Seattle later in 2026.

5

2025 Innovation
Grants Reviewed

4

2026 MAF Canine
Grants Reviewed

In 2025, the committee reviewed and recommended for funding four hemangiosarcoma studies that the CTMB funded at its December meeting. Study 25CAINEL-0040: Targeting the Integrin $\alpha 6 \beta 4$ Complex in Canine Hemanigosarcoma, Dr. Alexandre Le Roux, Sloan Kettering Cancer Center. “Our project has two main goals. First, we will study samples from 50 dogs with this cancer. We want to see how the presence of the integrin $\alpha 6 \beta 4$ relates to how long dogs survive, what genetic changes happen in the cancer when this integrin is present, and how it possibly helps cancer cells grow and spread. Second, we will design canine antibodies that can target the integrin $\alpha 6 \beta 4$. We will create two kinds of treatments with these antibodies: one with radioactive particles and one with chemotherapy drugs. Both will aim to kill cancer cells and should cause less harm to healthy tissues than current treatments.”

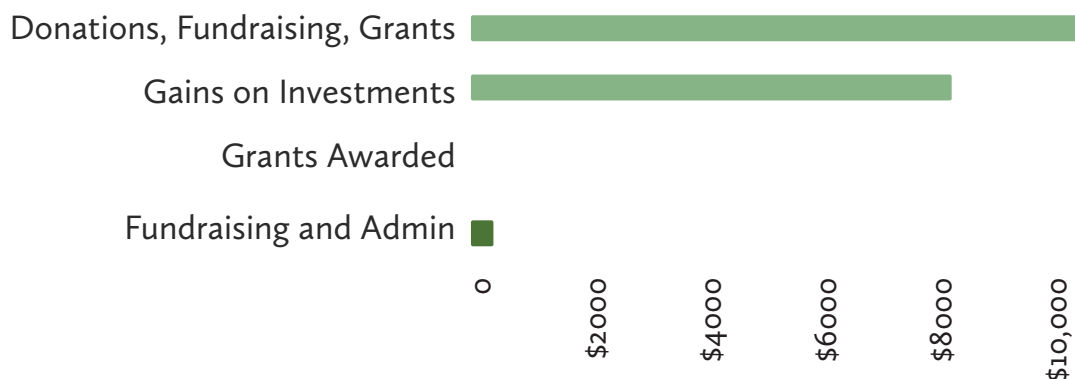
Study 25CAINEI-0032: Detection and Evaluation of treatment efficacy of visceral hemangiosarcoma (vHSA) using Raman molecular urinalysis fingerprinting, Ryan Senger, DVM. Virginia Tech. “We have created a new test called Raman Molecular Urinalysis (RMU). It checks urine for signs of cancer quickly, cheaply, and possibly at the point-of-care. In this proposed research, we will shape RMU to spot visceral hemangiosarcoma (vHSA), a deadly cancer in dogs. Unlike tests hunting for a single cancer clue, RMU examines the molecular makeup of urine. It ties this to metabolism, cancer growth, and immune reactions. Our two-year study, run across six locations (five clinical, one analytical), has two big aims: (1) detecting vHSA through RMU urine analysis and (2) using those findings to monitor tumor growth, cancer spread, treatment effects, and maybe even catch cancer earlier in at-risk dogs.”

Study 25CAINEI-0035: Mitochondrial Dysfunction and mtDNA Mutations in Canine Hemangiosarcoma: Novel Biomarkers for Early Diagnosis and Personalized therapy, Christoph Marycz PhD, CVT, International Institute of Translational Medicine. 25CAINEI-0029: Defining Functionally Distinct Phenotypic States of Hemangiosarcoma: A pathway to improved Therapeutics and Diagnostics in Canine Health, Heather Wilson-Robles DVM DACVIM(Onc), Ethos Discovery. “Recent findings in human oncology strongly indicate that mitochondrial dysfunction serves as a crucial driver of cancer progression, metastasis, and treatment resistance. This highly innovative study aims to address this critical gap by investigating mitochondrial dysfunction and associated mitochondrial DNA (mtDNA) mutations within canine HSA tumors. Utilizing advanced techniques, including spatial transcriptomics, cutting-edge mtDNA sequencing and comprehensive bioenergetic profiling, this study will identify regions of tumors exhibiting severe mitochondrial impairment and hyperactivation. Identifying region-specific mitochondrial dysfunction is vital, as it reveals different metabolic and genetic signatures directly linked to tumor aggressiveness. We hypothesize that region-specific mitochondrial dysfunction drives tumor aggressiveness through oxidative stress, mtDNA mutations, and synergy with oncogenic mutations. Identifying mitochondrial molecular signatures will lead to non-invasive blood-based biomarkers, enabling earlier detection and personalized therapies. Our approach ultimately promises significant advancements in the diagnosis and treatment of canine HSA, offering new hope for veterinarians, pet owners, and affected dogs alike.”



Education & Scholarship

The NCA Junior Scholarship and Education Support program, administered by the Newfoundland Club of America Charitable Trust, invests in the next generation of Newfoundland enthusiasts by awarding annual scholarships to Junior members who demonstrate active participation with Newfoundlands and commitment to their education. Established to encourage young people involved in dog shows, performance events, and other breed-related activities, these scholarships help recipients pursue higher education while fostering the values, skills, and passion that will sustain the Newfoundland community in the years ahead. Through this support, the Trust not only honors academic achievement and breed engagement but also strengthens the future leadership and stewardship of the Newfoundland world, reflecting the broader mission to nurture both the dogs and the people devoted to them.



Awarded To Date

\$41,500



Scholarships
Awarded

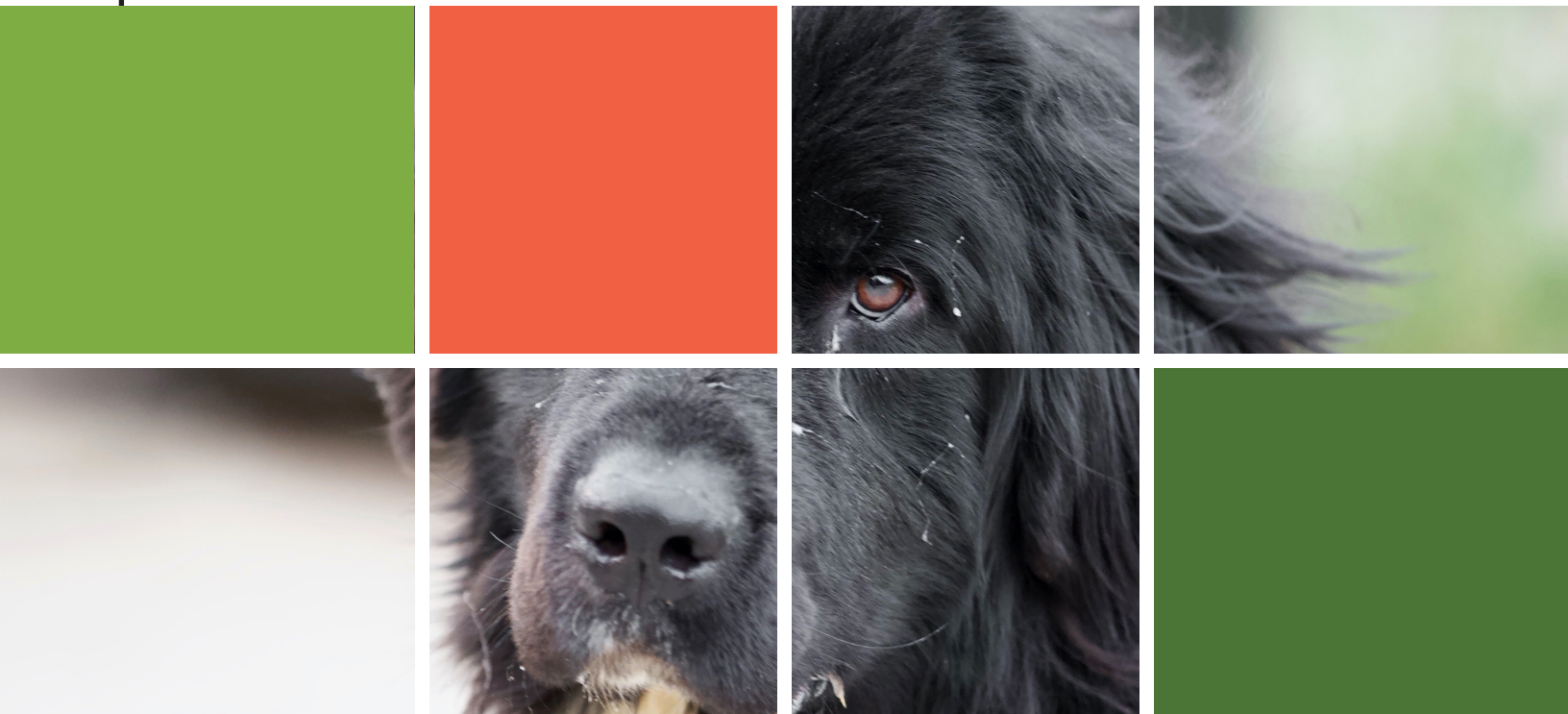
26

How To Help

Supporting the Newfoundland Club of America Charitable Trust with Tax Deductible Charitable Giving Today and Estate Planning for the Future.

Your contributions make a direct impact. Gifts to the Trust support:

- Rescue and placement of Newfoundland dogs into loving forever homes
- Critical health research to improve longevity and quality of life
- Educational programs for breeders, owners, and the public
- Scholarships for Junior Newfoundland handlers, investing in the future of the breed



The Newfoundland Club of America Charitable Trust (NCACT) is a 501(c)(3) nonprofit organization dedicated to advancing the welfare, health, education, and future of the Newfoundland dog. Through responsible stewardship and long-term planning, the Trust supports vital programs that protect and promote this remarkable breed for generations to come.

Tax-deductible charitable contributions to the NCACT directly sustain these important efforts while also offering meaningful financial and estate-planning benefits for donors. As a qualified charitable organization, eligible gifts to the Trust may be deducted under applicable tax laws.

New for 2026: A recent tax change allows individuals to deduct up to \$2,000 per year in charitable contributions without itemizing. One easy way to reach this threshold is by becoming a monthly donor to the NCA Charitable Trust. To learn more or enroll, visit ncacharities.org

For those aged 73 and older, Individual Retirement Account (IRA) distributions made directly to the NCACT qualify as Qualified Charitable Distributions (QCDs). These gifts can satisfy required minimum distributions (RMDs) while being excluded from taxable income, an efficient way to give while meeting federal requirements.

Beyond immediate tax benefits, charitable giving to the NCACT can be a powerful part of a thoughtful estate plan. Planned gifts such as bequests in a will, beneficiary designations, or trusts, allow donors to create a lasting legacy while continuing to support the breed they love.

Many donors choose to include the Trust in their estate plans because of a lifelong connection to Newfoundland Dogs through ownership, breeding, showing, working activities, or simple admiration for the breed's character and history. These gifts ensure that future generations will benefit from the Trust's mission and programs.

Charitable estate planning also offers peace of mind. Knowing that assets will be managed responsibly and aligned with personal values provides both fulfillment and purpose. For families, charitable bequests can model generosity and stewardship, reinforcing the importance of giving back.

With NCACT's carefully managed investment policies, donated funds are positioned to grow over time, helping the Trust keep pace with increasing needs while maximizing long-term impact. Supporting the Newfoundland Club of America Charitable Trust offers both immediate and enduring benefits. Through annual donations and planned gifts, donors strengthen the future of the Newfoundland breed while achieving their own philanthropic and estate-planning goals. Your generosity today helps ensure that the mission of the NCA Charitable Trust continues tomorrow—and far beyond.



With Gratitude

With sincere appreciation, we thank the many generous individuals and organizations whose support makes our work possible. This donor list reflects the collective spirit of giving from devoted supporters—many of whom chose to remain anonymous—along with clubs, estates, foundations, corporate partners, and the hosts of fundraising events who so thoughtfully gave their time and resources. Your generosity, in all its forms, strengthens our mission and has a lasting impact. We are deeply grateful for your commitment and belief in this work.

The NCA Charitable Trust Management Board,
Clyde Dunphy, DVM
Lori Littleford
Mary Lou Cuddy
Mary L. Price
Mary Jane Spackman
Kikuko Chang
Denise Hatekayma
John Cornell
Christopher Plum
Roger Powell

Supporting Clubs

Genessee Region Newfoundland Club
High Country Newfoundland Club
Kennel Club of Buffalo
Kennel Club of Philadelphia
North Central Newfoundland Club
Penn Ohio Newfoundland Club
Upper Mid-West Newfoundland Club

Estates

Charles Carnegie Trust
Karyn Carpenter Estate
Lori Mo Estate
Joseph & JoAnne Wucherer Estate
Yocum Estate

Foundations

The Cohen Family & Auto Club
Eternal Paws
Foraker/Sieversen Family Fund
James & Mary McCarthy Charitable Fund
Nancy Allison Perkins Foundation
Jonathan Wolman Tzedaka Fund
Weller Family Foundation

Donors

Dennise Aardema
 Marie Acosta
 Wally and Robin Adamson
 Dee Adrian
 John and Ellen Affel
 Lezli Alford
 Peggi Simmons & Craig Altschul
 Lynne and Bill at ThreePonds
 June Andrejko
 Constance Andronico
 Sue Auger
 Margaret Baber
 Pat Back
 David and Jennifer Baker
 Lynne Baker
 Robb Ball
 U. S. Charitable Gift Trust, Darby Barker
 Tyler Baston
 Ned Bean
 Patricia Beck
 David Bell and Duke Energy match
 Trisha and Matthew Bell
 Trudy Bennett
 Eileen Bergal
 Jody and Janet Berget
 Lynn Birney
 Karen Blackwell
 Mike and Diane Blandina
 Charlie Blanker
 Patricia Blewitt
 Susan Blissert
 Jeanne Blythe
 Stacey Bogardus and Roche Diagnostics match
 Rosemary Bonner
 Patrick Bonnette
 Eve Boutsis
 Pamela Bowerman
 Renee Bowie
 Kari Brekke
 Quincy and Brendan
 Brick
 Deborah and Todd Bridge
 Mary C. Broihier and J. C. Randolph
 Christopher Bromson
 Danielle Brow
 Brian K. Brown
 David C. Brown
 Kathleen M. Brown
 Paula Brown
 Sherri Brown
 Abby Bruce
 Rita and Chuck Burnam
 Susan and Laine Bushart
 Joyce Butler

David C. Brown
 Kathleen M. Brown
 Paula Brown
 Sherri Brown
 Abby Bruce
 Rita and Chuck Burnam
 Susan and Laine Bushart
 Joyce Butler
 Mary Bylone and Sylvia Delson
 Candace Cahill
 Eve Caimano
 Sawyer Campbell
 Vincent Campbell
 Heidi Capozzi
 Pat and Craig Carlson
 The Cetor family
 Charliebee
 Thomas Cheatham
 Kimberley Chong
 Dorothy Clayton
 Teryn Cleary
 Katie Clegg
 Alyssa Clevenger
 Patty Clifton
 Judy Cochran
 Jewel and John Cody
 Mary Coelho-Wood and Daniel Wood
 Judy K. Cohen
 Leigh Colberg and JP Morgan Chase match
 Kari Collison
 Rodney and Karrie Cook
 Karen Coriell
 Kim Cox
 Adrienne Craig
 Cindi and Mark Craig
 Mary Lou Cuddy
 Denise M. Cuneo
 Jan Curtis
 John and Beverly Cusac
 Richard and Kathleen Dahmer
 John J. Dean
 Frances, Jack and Sarah DeBlasio
 Grace DeMann
 Karen Demichele
 Felicia Diamond
 Nancy Dickens
 Deborah Dimeo
 Nicki Dobson
 Kayleigh Dodds
 Katie Dolan
 Doman family
 Hannah Donahoe and Joe Soderberg
 Kevin Donovan
 Darryl Drake and Abbie match

Audrey and Glenn Driscoll
 Clyde and Catherine Dunphy
 Kylie Ebringer & Microsoft match
 Holly Eden
 Susan Egan
 Tara Ensing
 Heidi Erickson
 Doug Erkkila
 Carol Farnsworth-Rhodes
 Marla Fast
 Antonia Faull
 Martha Feldenstein
 Laura Feldman
 Lynn Feldman
 Joan and Douglas Fenwick
 Judith Fischer
 Cindy and John Flowers
 Heidi Forrest
 Lorna Fortune
 Tammi Franzese
 Ashley Gaer & Andrew Knoop
 Frank and Kathy Galovic
 Rodney Gansho
 Carol and Jack Geiman
 Regina Gemignani
 Carla Gengler
 Lori George
 Charles and Jean Giangarra
 Nancy Glair
 Teresa Gordon
 Christine and Dwight Gorsuch
 Jim and Karen Grace
 Kristy Graham
 Pamela Grant
 Susan Grant
 Jody and Ron Grunfeld
 Susan and Robert Guilloitte J
 oan E. Gunn
 Raymond Gunn
 Steven Gunther
 Charles McL. Hadley III
 Chris and Ann Halatek
 Dr. Jennifer Hall
 Sandy Hall
 Kathleen Hamilton
 Janet Harriss
 Rhoda and David Hartmann
 Mark and Katrina Haskell
 Pamela Haskin
 Teresa Haymes
 Barbara Hearn
 Edward Hellriegel
 Shawn Helmicki Charles Henckler &
 Xcel Energy

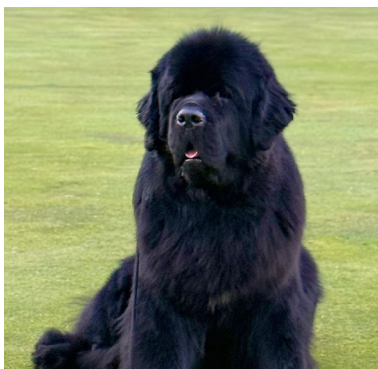


Donors

Tom and Desiree Hensel
 Lou and Judy Hesse
 HighSeas Newfoundlands
 Sally T. Hines
 Trish Holden
 Bruce and Judy Holmes
 Stephen Hourihan
 Roberta Howard
 Gary and Lynda Hoyt
 Lisa Hunt
 Irene Hurtado
 Sheila Hutchison
 Catherine Hyatt
 Barbara labant
 William Illingworth
 Mike and Judy Imel
 Yuka Isayama
 Rosemary James
 Jamie Jennings and George Lee
 Ellen Jesaitis
 Jesse
 Rebecca Johnson
 Eileen Joyce
 Andrea Jung
 Robin Katen
 Paul and Carole Katinas
 Diane Kentros
 Kevin and Deb Kern
 Lynn Kitch
 Lydia Klein
 Deb Klie
 Michael Kliewer
 Steve and Samantha Koziol
 Amber N. Kraft
 Mary Ellen Kraus
 Ana Peraza Kroeger
 Keith and Lisa Kroll
 Edwin Kroll
 Karen Kuharic
 Katharine Kuharic
 Deena Kuhn
 Louise Laughlin and Costco match
 Thomas and Marian Leen
 Jennifer Leicht
 Lawrence and Narcinda Lerner
 John LeVett
 Mary Jeanne Levitt
 Susan and Bill Liley
 Sarah Lind
 Lauren Lloyd
 Jenni Lott
 Anthony Lyman
 Diane and Owen Lynch
 Kat Lynn

Gloria Madsen
 Janet Madsen
 Vicki Maeckle
 Michael J. Maertens
 Glen and Mary Malchow
 Malekos
 Kent and Renee Marquardt
 Jessie Marshall
 Bill Matlock
 Dr. Martin and Margo Matthews
 Bobby and Cathy Mayweather
 Geraldine McClenaghan
 Anastasia McClurg
 Donna McConn
 Charlotte J. McCormick
 Gregory and Cathy McCracken
 Geraldine McEwen
 James and Eula McKay
 Michael McKeon and Julia Spadt
 Ted Meeker
 Wayne and Patty Methner
 Amy Metz
 Deborah Micell-Sweatt
 Betsy Fisher Miner
 Cynthia Mitchell
 Kathleen Mitchell
 Dana and Joe Molloy
 Brooke Moore
 Meredith Moore
 LoriLeigh Moreland
 Carolyn Morrill
 Bob and Heidi Mueller
 Sharon and Steve Mulkeen
 Dr. Erin K. Murphy
 Melody Music and Richard Jack
 Jenny Nelson
 Margaret Nelson
 Britany Nickolich & City Natl. Bank match
 Robert A. Novak
 Marjorie Odle
 Michele Olson
 Mary Orr
 Liz Ossen
 Debbie Ossit
 Jacqueline Ostendorf
 Erica Ott
 Andrea and Gary Ottey
 Janine Packard
 Tami Palomba
 Amanda Parker
 Jan Pavlisich
 Annalyn Paz
 Amy and Ana Peraza-Kroeger
 Elizabeth Peterson

Dana Phillips
 Kaitlan Phillips
 Eva Plasky
 Chris Plum
 Jody Porrazzo, PhD
 Jim Pospisil
 Friends of Sue Putt
 Jenny Quackenbush
 Drew Quinn
 Shaun Quirk
 Laurel Rabschutz and Paul Pribula
 Jeanne and Bob Raish
 Krista Rakich
 Francie Rakiec
 Anita and Arun Ramesh
 Pat and Judi Randall
 Melanie Reynnells
 Joel and Mary Rich
 Talsania Rikin and CBRE match
 Aleida Rios
 Beverlee Roberts
 Kelly Sanderson Roberts
 Pamela Roberts
 Norma Jean Robinson
 Paela Rodner
 Lulu Rodriguez
 Louise Rosenberg
 Ronda Rosenberg
 Joan Rosenberger
 Chris Ross
 Jennifer Rudolph
 Sara Ryan
 Dorothy Schinella
 Schlagel Family
 Kevin Schmitke
 Mary Scholten
 Deborah Schuch
 Quinn Schuchardt
 Linda Seales
 Pat Seawell
 Diane Selinger
 Ellen Selsted
 Cheryl Shelton
 Sheri Shermer
 Sarah Kuss Shivler
 Pamela Shonk
 Arthur Shune
 Daniel Sibila
 Clare Jackson Simonds
 Kevin Skilton
 Christine Smith
 Chirstine Sonntag
 Kelli Souders & JP Morgan Chase match
 Amy Spetsios



Donors

Gina Stanford
Sam Starks
Lisa Steele and Ameriprise match
Carl Steiling
Laurie Sten
Karen Steward and Luca II
Jennifer Stewart
Susan Stiffler
Vic and Candi Strunk
Rick Sunseri
Lisa Sutton
Patricia Swire and Microsoft match
Greg and Johanna Szynskie
Christi Tangye and Johns Manville match
Annette Tarascio
Joy Tarter
Amy and Bjorn Taylor
Terry and Sara Temple
Timothy Tepatti
Debra Thornton
Kris and Darrin Tidrick
Amy and Bob Tokarz
Sofya Tokman
Ed Trombley
Kristen Turi
Jennie Van Tuyl
Jenn Vampola
Paul Van Anda – eBay Sellers for Charity
Rita Ellen Van Brandeghen
Johan and Pamela Van Giessen
Michelle Vanderbeck
Diana Veryioglou
Robin Vincent
The Virginia Gang
Larry Volovski
Jeannette Voss
Robert J. Wagner
Sara Wagner
Irene Warren
Nancy Weaver
Katherine Weaver-Klein and Russell Klein
Laura Webb
Jess and Matt Weners
Kim White
Alyssa Wiede
Kailey Williams
Williams Family
Aaron and Melissa Willis
Bruce and Tracy Willoughby
Carol Winnert
Jonathan Wolman
Kathy Wortham
Patricia Yates
Masayuki Yoshida

Patricia and Eugene Youngquist
Jennifer Zablotny
Adam and Claire Zangerle
John and Patricia Zangerle
Cassandra Zelch
Donna Zink
Sandra Zippay
Lisa Zobrist
Harry and Cecile Zohn

Corporate Donors

Amazon Services
The Auto Club
Bones
Bonfire Funds, Inc.
Oliver Carson, Newfoundland Coffee Company
Change Team
HubPages
JFC, LLC
Paypal Giving Fund
Purina Parent Club Partnership Program

Events

2025 NCA National Specialty
“Yoga For Pups” event
Bark Bash raffles
Purses for Pups auction
Newfie Palooza, Central Ohio Newfoundland Group



Stay In Touch

NewfCare

Quarterly Updates

Stay current with the activities of NCA Charities, read heartwarming rescue tales, find out about cutting-edge research updates and learn about the progress of the Trust. Subscribe with one click from our website.

www.ncacharities.org

Information Central

All the information you need to support NCA Charities. Easy, 1-click donations, planned giving information and details for legacy giving. Archives of our NewfCare newsletter and minutes of all of our meetings. Study reports and updates, rescue stories and more.

Facebook

Join the Conversation

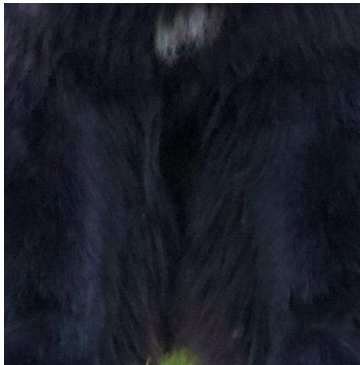
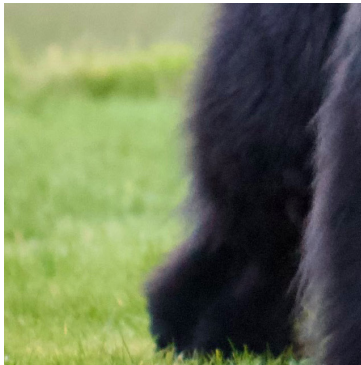
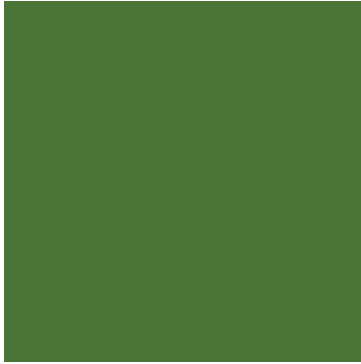
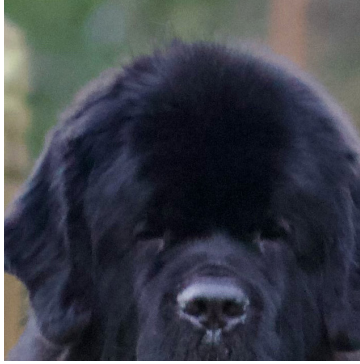
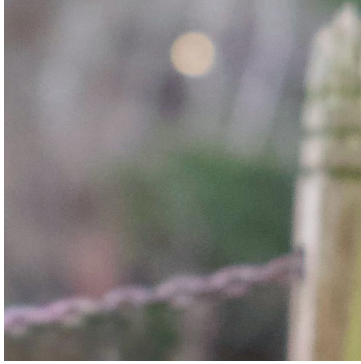
Up-to-the-minute news and updates from NCA Charities. Join in conversations with others who support our work and hear from many voices in the rescue and research communities.

info@ncacharities.org

Ask a Question

When you need more, just ask! Want to volunteer for one of our programs or committees? Need advice on planned giving? Want more information on a study? We're here to find the answers you need.





Thank You

- We are a 501(c)(3) Public Benefit Trust Federal ID 06-1500326
- 1004 State Rd 78, Mt Horeb,WI 53572
- www.ncacharities.org